

Consistent Antihypertensive Efficacy of the RNA Interference Therapeutic Zilebesiran: Subgroup Results from the KARDIA-1 Phase 2 Study in Patients with Hypertension

Manish Saxena^{1,2}, Akshay S Desai³, Michel Azizi^{4,5}, Anil Gupta⁶, Jongtae Lee⁷, Daniel Stiglitz⁷, Nune Makarova⁷, Nitender Goyal⁷, Weinong Guo⁷, Dion Zappe⁷, George Bakris⁸

¹Barts Health NHS Trust, London, UK; ²Queen Mary University of London, London, UK; ³Cardiovascular Division, Brigham & Women's Hospital, Boston, MA, USA; ⁴Université Paris Cité, Paris, France; ⁵Hôpital Européen Georges Pompidou, Paris, France; ⁶Albion Finch Medical Centre, Toronto, ON, Canada; ⁷Alnylam Pharmaceuticals, Cambridge, MA, USA; ⁸University of Chicago Medicine, Chicago, IL, USA

Presented at the American College of Cardiology Annual Scientific Session & Expo, April 6–8, 2024, Atlanta, GA, USA



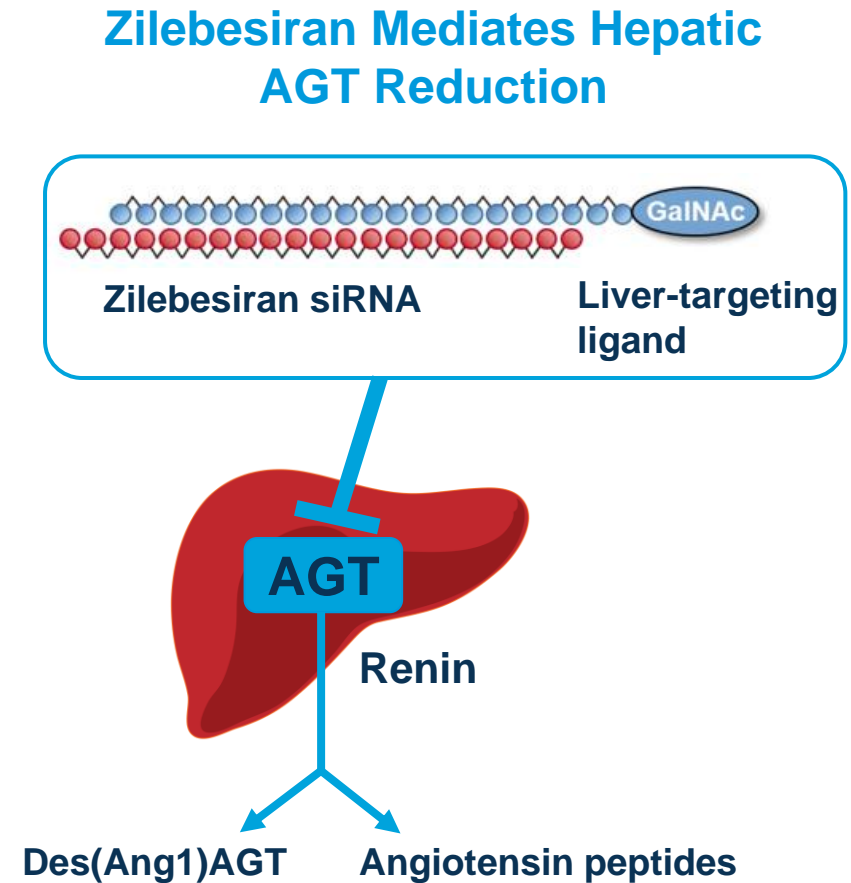
A Novel Investigational RNAi Therapeutic with Potential to Address an Unmet Need for Hypertension

Zilebesiran

- An investigational subcutaneously administered RNA interference therapeutic targeting hepatic synthesis of AGT, the most upstream precursor of the renin–angiotensin system
- Demonstrated clinically meaningful, significant reductions in 24-hr mean ambulatory and office SBP compared to placebo at Month 3, which were sustained over 6 months in the Phase 2 KARDIA-1 study¹

Objective

- To assess the efficacy and safety of zilebesiran across key patient subgroups from KARDIA-1



KARDIA₁: A Randomized, Double-Blind, Dose-Ranging Study of Zilebesiran in Patients with Mild-to-Moderate Hypertension

Patients (N=394)

- Age 18–75 years
- 2–4 week^a washout of previous antihypertensive medication
- Daytime mean ambulatory SBP 135–160 mmHg

1:1:1:1:1

RANDOMIZATION

Placebo Q3M SC

OR

Zilebesiran 150 mg Q6M SC

OR

Zilebesiran 300 mg Q6M SC

OR

Zilebesiran 300 mg Q3M SC

OR

Zilebesiran 600 mg Q6M SC

Primary Endpoint: Change from baseline at Month 3 in 24-hr mean ambulatory SBP^b

Key Secondary Endpoint: Change from baseline at Month 3 in office SBP^b

Safety Endpoint: Frequency of AEs

Subgroups^{c,d}

Age

Sex

Race

Baseline 24-hr mean ambulatory SBP

Baseline eGFR

Baseline plasma renin concentration

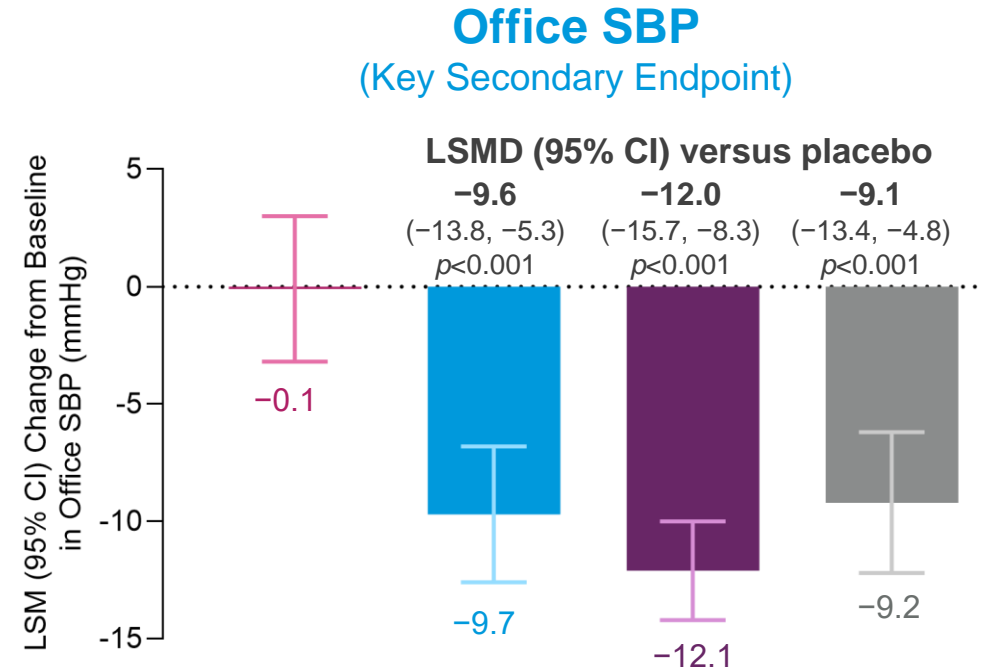
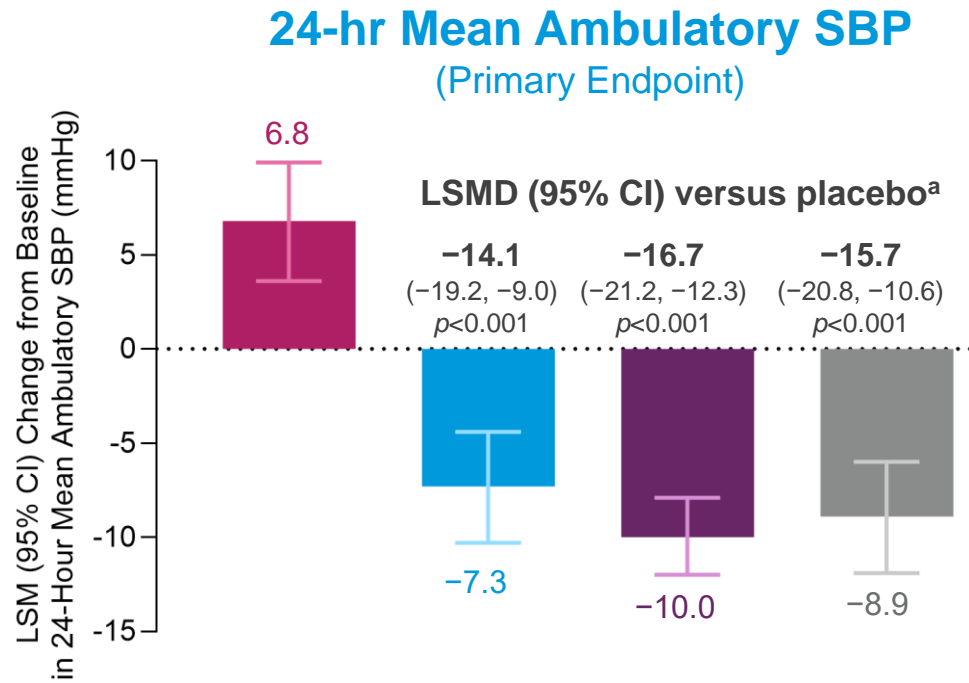
Baseline Demographics and Characteristics

	Placebo (N=75)	Zilebesiran (all doses combined) (N=302)	Total (N=377)
Mean age, years (min, max)	56.8 (33, 75)	56.7 (22, 75)	56.8 (22, 75)
Age ≥65 years, n (%)	21 (28.0)	82 (27.2)	103 (27.3)
Male, n (%)	37 (49.3)	173 (57.3)	210 (55.7)
BMI ≥30 kg/m ² , n (%)	37 (49.3)	177 (58.6)	214 (56.8)
Race, n (%)			
Asian	5 (6.7)	18 (6.0)	23 (6.1)
Black	18 (24.0)	75 (24.8)	93 (24.7)
White	52 (69.3)	207 (68.5)	259 (68.7)
Any other race	0	2 (0.7)	2 (0.5)
Mean baseline BP, mmHg (SD)			
24-hr ambulatory SBP	141.1 (7.9)	141.9 (8.6)	141.8 (8.4)
24-hr ambulatory DBP	81.7 (7.8)	81.9 (8.4)	81.8 (8.3)
Office SBP	143.1 (13.3)	141.4 (11.0)	141.8 (11.5)
Office DBP	87.9 (10.5)	86.8 (9.1)	87.0 (9.4)
eGFR <60 mL/min/1.73 m ² , n (%)	11 (14.7)	27 (8.9)	38 (10.1)

Analysis population includes all randomized patients who received any amount of study drug and excludes patients enrolled at sites in Ukraine.

BMI, body mass index; BP, blood pressure; DBP, diastolic blood pressure; eGFR, estimated glomerular filtration rate; SBP, systolic blood pressure; SD, standard deviation.

Primary Results Showed Significantly Reduced SBP at Month 3 and an Encouraging Safety Profile



■ Placebo (n=60) ■ Zilebesiran 150 mg Q6M (n=68) ■ Zilebesiran 300 mg Q6M and Q3M combined (n=137^b) ■ Zilebesiran 600 mg Q6M (n=65^c)

- SBP reductions were sustained through Month 6

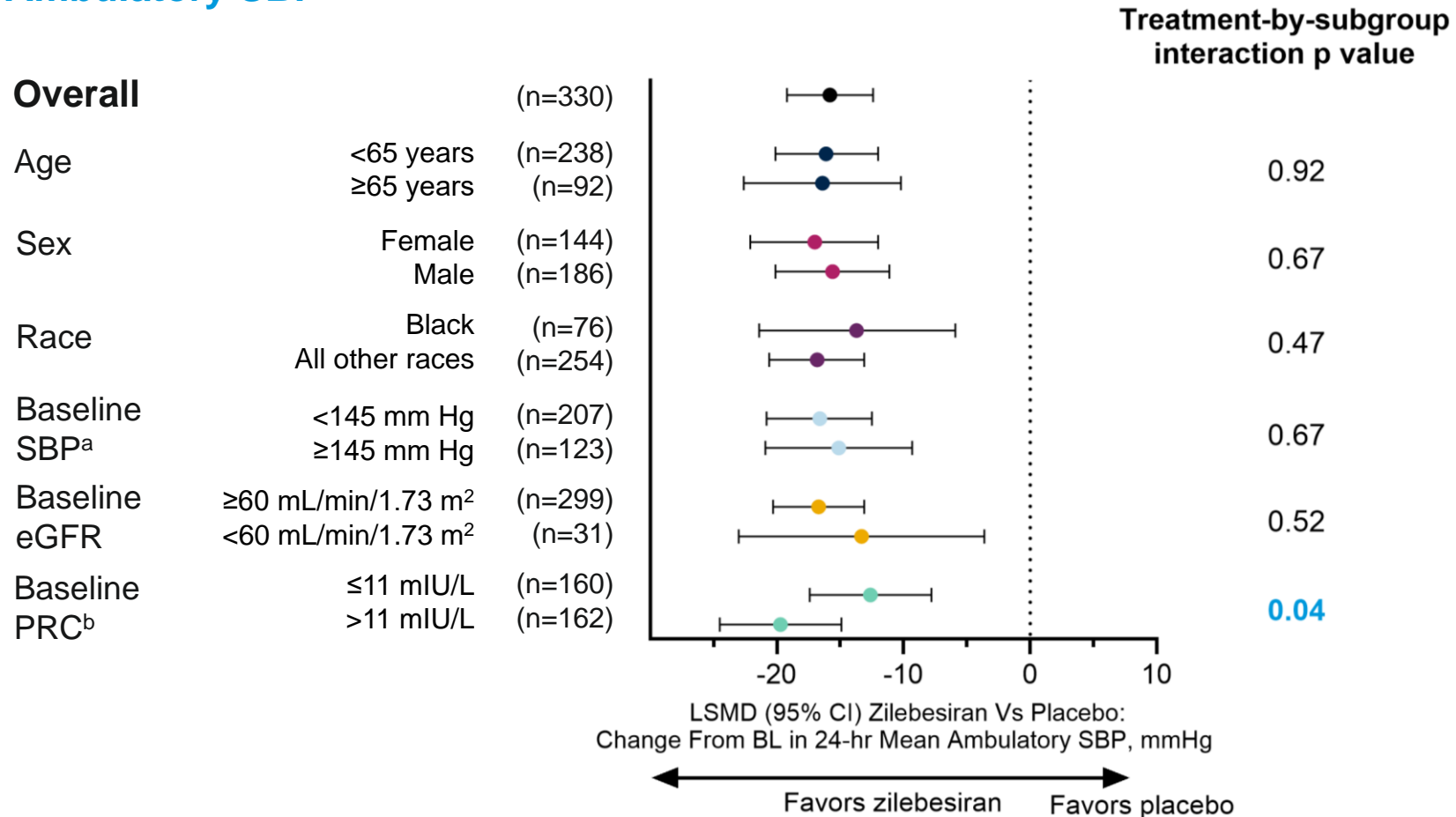
Safety

- Rates of serious or severe AEs were low; no drug-related AEs were serious or severe
- Most hyperkalemia and hypotension AEs were mild, transient, and resolved without intervention^d

Rescue antihypertensive medication was permitted after Month 3 assessments and was discontinued by Month 5 for Month 6 assessments. Blood pressure assessments were censored if taken while patients were receiving or in the 2 weeks after stopping any rescue medication. ^aAdjusted 95% CI and p values for the Month 3 primary analysis are based on Dunnett's test. ^bn=133 for office SBP data. ^cn=64 for office SBP data. ^dOne hypotension event (zilebesiran 300 mg Q3M) requiring treatment with normal saline.

Consistent Placebo-Adjusted Ambulatory SBP Reductions Were Observed Across Subgroups at Month 3

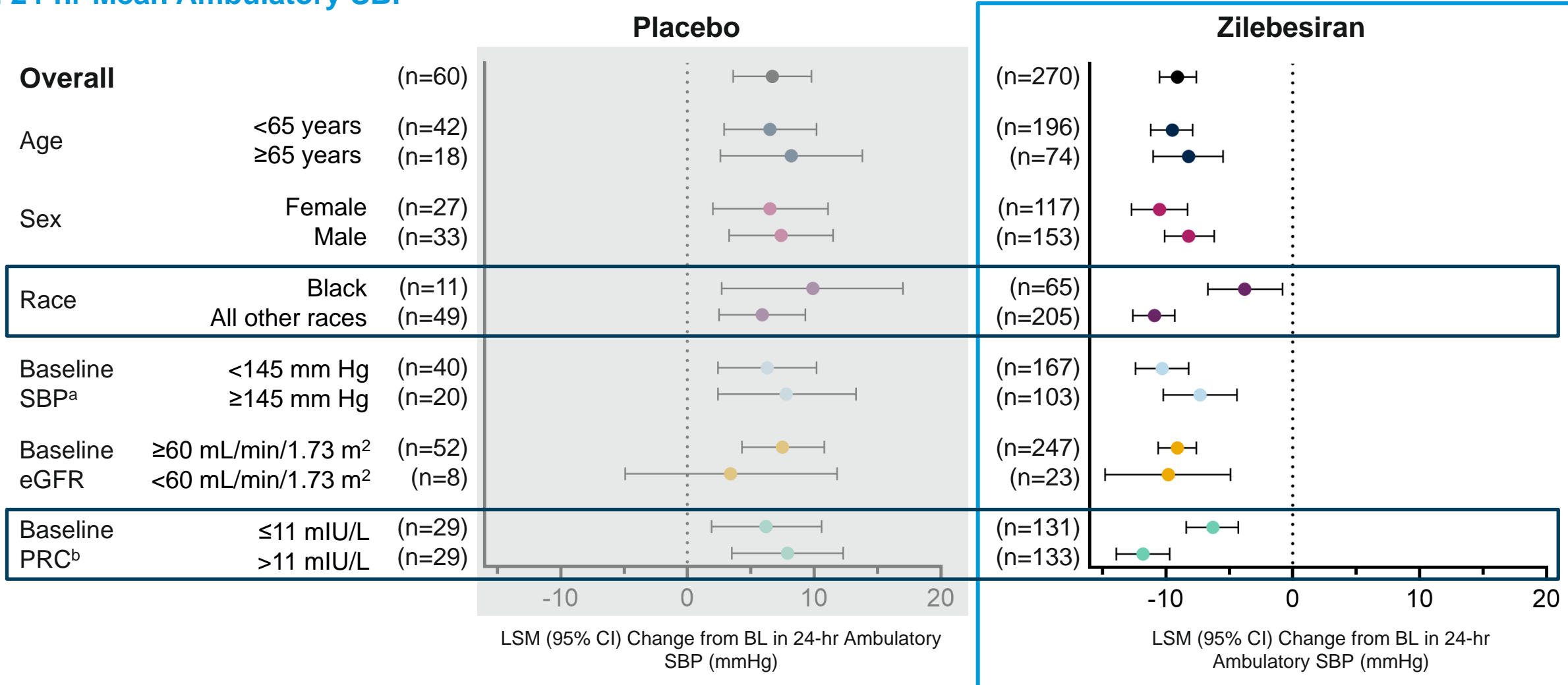
LSM Difference (95% CI) between Zilebesiran (All Doses Combined) and Placebo in Change From Baseline in 24-hr Mean Ambulatory SBP



For subgroup analyses, MMRM model includes treatment, visit, subgroup and treatment-by-visit, treatment-by-subgroup, subgroup-by-visit, treatment by visit by subgroup interaction terms, race (black, all other races) when race is not the subgroup to be analyzed, as fixed factors, baseline 24-hr mean SBP assessed by ABPM as a covariate. ^a24-hr mean assessed by ABPM. ^bBaseline PRC above or below median (11 mIU/L). ABPM, ambulatory blood pressure monitoring; BL, baseline; CI, confidence interval; eGFR, estimated glomerular filtration rate; LSMD, least-squares mean difference; MMRM, mixed model for repeated measurements; PRC, plasma renin concentration; SBP, systolic blood pressure.

Change From Baseline in Ambulatory SBP

LSM (95% CI) Change from Baseline in Patients Treated with Zilebesiran (All Doses Combined) and Placebo in 24-hr Mean Ambulatory SBP

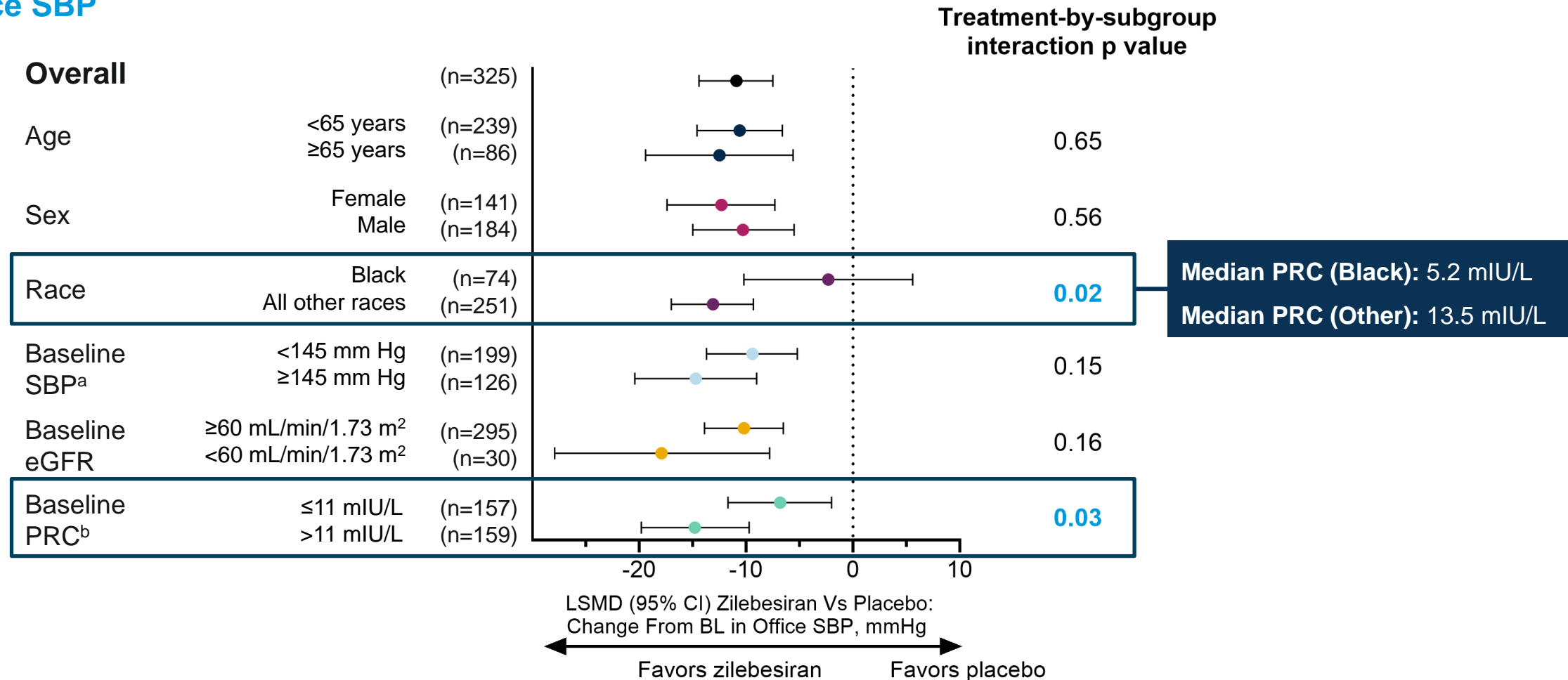


For subgroup analyses, MMRM model includes treatment, visit, subgroup and treatment-by-visit, treatment-by-subgroup, subgroup-by-visit, treatment by visit by subgroup interaction terms, race (black, all other races) when race is not the subgroup to be analyzed, as fixed factors, baseline 24-hr mean SBP assessed by ABPM as a covariate. ^a24-hr mean assessed by ABPM. ^bBaseline PRC above or below median (11 mIU/L).

ABPM, ambulatory blood pressure monitoring; BL, baseline; CI, confidence interval; eGFR, estimated glomerular filtration rate; LSM, least-squares mean; MMRM, mixed model for repeated measurements; PRC, plasma renin concentration; SBP, systolic blood pressure.

Consistent Placebo-Adjusted Office SBP Reductions Were Observed Across Most Subgroups at Month 3

LSM Difference (95% CI) between Zilebesiran (All Doses Combined) and Placebo in Change From Baseline in Office SBP



For subgroup analyses, MMRM model includes treatment, visit, subgroup and treatment-by-visit, treatment-by-subgroup, subgroup-by-visit, treatment by visit by subgroup interaction terms, race (black, all other races) when race is not the subgroup to be analyzed, as fixed factors, baseline office SBP as a covariate. ^a24-hr mean assessed by ABPM. ^bBaseline PRC above or below median (11 mIU/L). ABPM, ambulatory blood pressure monitoring; BL, baseline; CI, confidence interval; eGFR, estimated glomerular filtration rate; LSMD, least-squares mean difference; MMRM, mixed model for repeated measurements; PRC, plasma renin concentration; SBP, systolic blood pressure.

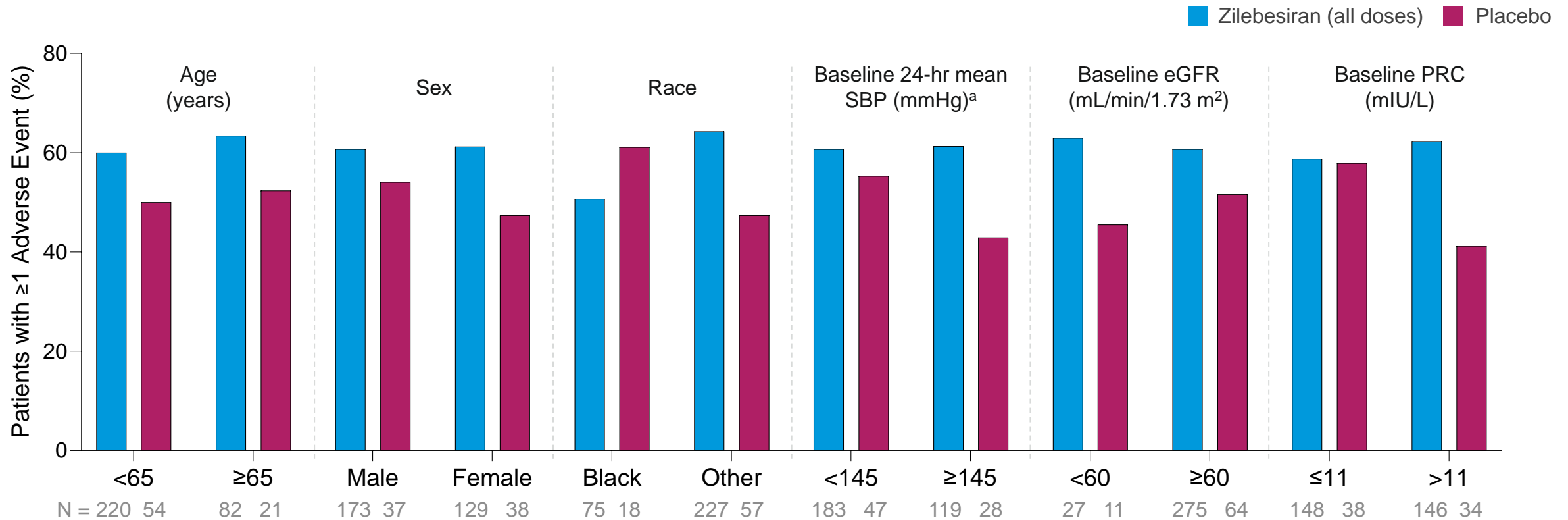
Change from Baseline in SBP at Month 3 for PRC×Race Subgroups

LSM Change From Baseline (SE) in Patients Treated with Zilebesiran (All Doses Combined)

Race	Baseline PRC above or below median (11 mIU/L)	Zilebesiran (all doses combined)	
		24-hr mean ambulatory SBP	Office SBP
Black Median PRC: 5.2 mIU/L	≤11 mIU/L (N=52)	-0.7 (2.1)	-2.7 (2.0)
	>11 mIU/L (N=17)	-12.1 (3.0)	-13.4 (2.5)
All other races Median PRC: 13.5 mIU/L	≤11 mIU/L (N=96)	-8.3 (1.2)	-10.9 (1.2)
	>11 mIU/L (N=129)	-12.6 (1.1)	-13.7 (1.1)

- Greater mean SBP reductions were observed in patients with higher baseline PRC, across both 24-hr mean ambulatory and office measures

Consistent Safety of Zilebesiran Across Subgroups Over 6 Months



- Overall, AEs were reported in 50.7–64.3% of patients who received zilebesiran across subgroups
- Frequency of key AEs of interest^b (acute renal failure, hypotension, and hyperkalemia) was low and mostly transient without the need for intervention, with no notable differences across most subgroups
 - Slight increases in hypotension rates were observed in patients ≥65 years or eGFR <60 mL/min/1.73m²

^a24-hr mean assessed by ABPM. ^bAEs are defined per MedDRA terminology. Acute renal failure includes events of increased serum creatinine, increased blood urea, decreased glomerular filtration rate, and acute kidney injury. Hyperkalemia AEs include hyperkalemia and increased serum potassium. Hypotension AEs include decreased blood pressure, hypotension, and orthostatic hypotension.

ABPM, ambulatory blood pressure monitoring; AE, adverse event; eGFR, estimated glomerular filtration rate; MedDRA, Medical Dictionary for Regulatory Activities; PRC, plasma renin concentration; SBP, systolic blood pressure.

Conclusions

For US HCPs Only
Scan to View Congress
Material Presented



- In KARDIA-1, efficacy and safety of zilebesiran versus placebo were generally consistent across subgroups of interest defined by baseline demographic and disease characteristics
 - Greater SBP reductions in patients with high baseline plasma renin concentration are consistent with the mechanism of action of zilebesiran
 - Variation in SBP reductions in black patients versus all other patients in KARDIA-1 is largely explained by differences in baseline plasma renin concentrations, therefore rectifying low renin profiles in black patients may augment the treatment response to zilebesiran
- Quarterly or biannual subcutaneous dosing of zilebesiran may be an effective treatment strategy in a broad population of patients with hypertension
- Further research is needed to elucidate the impact of plasma renin concentration, race, and background antihypertensives on zilebesiran treatment response

Thank you to the patients, their families, investigators, study staff, and collaborators for their participation in the KARDIA-1 study